

A soft place to land (p1)

Sara Bareilles

Arr. S Hasson

A dream needs be-lie -ving to feel like the real thing May we all be -

A dream needs be-lie -ving to feel like the real thing May we all be -

Sorry about the clefs...

A soft place to land (p2)

Sara Bareilles

Arr. S Hasson

7

lu - cky

So lu - cky

lu - cky

Sorry about the clefs...

Lead

A musical staff in treble clef, key signature of three sharps (F#, C#, G#), and 6/8 time signature. The melody consists of eighth and quarter notes with slurs and accents.

A dream needs be- lie -ving

to feel like the real thing

May we all be -

A musical staff in treble clef, key signature of three sharps (F#, C#, G#), and 6/8 time signature. The melody consists of quarter and eighth notes with slurs and accents.

- - So lu - cky - .

Bari

Musical notation for the first line of the Bari part, featuring a bass clef, a key signature of three sharps (F#, C#, G#), and a 6/8 time signature. The melody consists of eighth and quarter notes with slurs and accents.

A dream needs be- lie -ving

to feel like the real thing

May we all be -

Musical notation for the second line of the Bari part, continuing the melody from the first line. It features a bass clef, a key signature of three sharps, and a 6/8 time signature. The melody includes slurs and accents.

lu - cky

Bass



A dream needs be- lie -ving

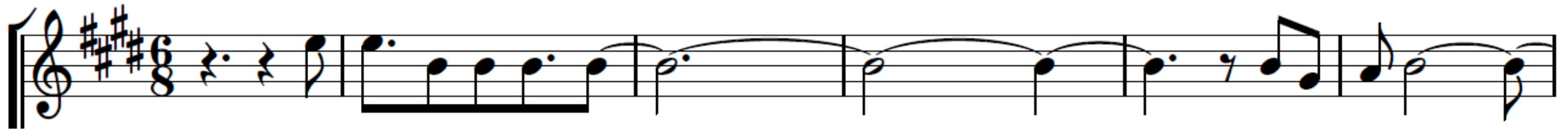
to feel like the real thing

May we all be -



lu - cky

Tenor



A dream needs be- lie -ving - - . May we all be -



- - lu - cky - .